

## IN-LINE PINPOINT CARBONATOR



### HIGH EFFICIENCY IN CARBONATION

The Pinpoint Carbonator is primarily designed and suited for carbonation of beer, water, soda, wine, and other qualifying liquids but also used for nitrogen injection and wort aeration. The product portfolio has a full range of available capacities (see technical specification). Smallest, model 1 inch (Size 25), ideally suited for craft breweries, microbreweries, small wineries and other small operations with low flow applications.

The Pinpoint Carbonator is designed for highest CO<sub>2</sub> saturation, and intimate gas-to-liquid bonding with micro-pore, stainless steel injector plates dispersing very fine, 5 – 9 micron size bubbles.

The injector plates in the Pinpoint Carbonator are micro porous and feature

large contact on both sides. Beer passes across the plates as a thin liquid film, immediately receiving full CO<sub>2</sub> saturation even at the lowest possible flow rate. The foam head remains stable over long time periods; when the head does recede, CO<sub>2</sub> saturation continues to hold at a high level.

The immediate saturation and improved bonding provided by pinpoint carbonation reduce foaming during the transfer of beer from Ruh to storage and greatly reduce the beer's air content. Residual CO<sub>2</sub> is used for carbonation from Ruh stage to 2.75 volumes – or, depending on flow requirements, up to 3.0 volumes – in one pass-through.

### PINPOINT CARBONATOR BENEFITS

- Designed for highest CO<sub>2</sub> saturation
- The product portfolio has a full range of available capacities
- Simple in-line installation, in either vertical or horizontal line runs.
- Stainless steel construction
- Fully suited for CIP cleaning (solutioning-in-line) or cleaning by use of a ball brush when unit removed from line and replaced with a spool piece.
- Easy access to internal components (porous discs and check valves).
- Lowest pressure drop of any in-line or similar carbonating device
- No longer collapsed foam issues

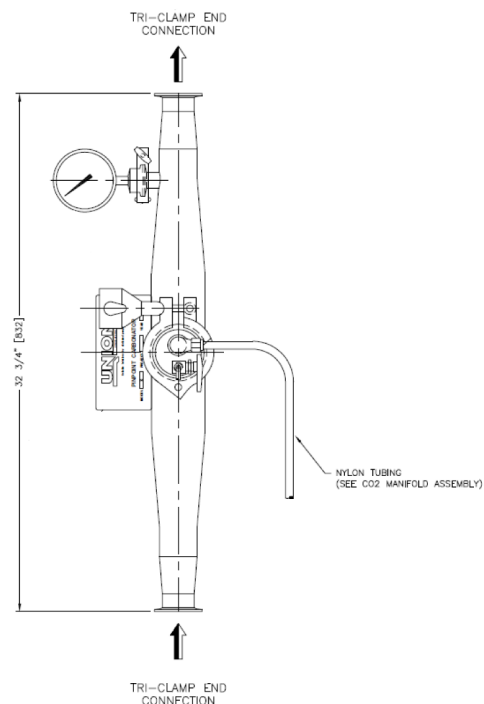
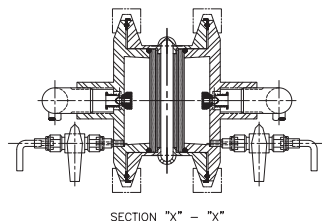
## SCOPE OF SUPPLY

Pinpoint Carbonator

- Pressure gauge for liquid
- Pressure gauge for CO<sub>2</sub> gas
- Manifold for CO<sub>2</sub> supply with adjusting valves
- Check valve
- Drain valve

## DESIGN CODE

- ASME – not applicable
- PED (optional)



English units (dimension in inches)					
Carbonator size/model	Max. capacity		"A"	Max. width	Weight lbs.
	bbls	gpm			
1"	25	13	19 1/2"		15
2"	110	57	27 3/4"	18 5/8"	40
3"	350	181	34 7/8"	18 5/8"	50
4"	550	284	41 1/4"	19 5/8"	62
5"	820	424	48 7/8"	24"	75
6"	1200	620	59"	24"	90

Metric units (dimension in mm)					
Carbonator size/model	Max. capacity		"A"	Max. width	Weight kg.
	hl/hr	lpm			
25	30	49	495		7
51	129	215	705	473	18.2
76	411	685	889	473	22.7
102	645	1076	1048	498	28.1
127	962	1603	1241	610	33.7
152	1408	2346	1499	610	40.9